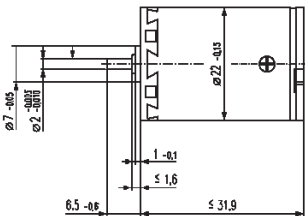
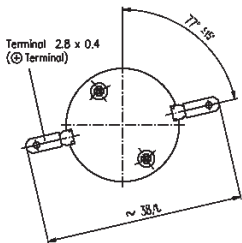
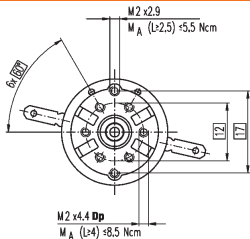


# Motors

## 22mm Dia. Motor

### DC Motors

Ø2mm Motor Shaft  
5 Watt - Precious Metal Bushes CLL



Motors 5 W Ø22 mm

Motor Data		HPCMAX110119	HPCMAX110124	HPCMAX110127	
1	Nominal voltage	V	6.0	12.0	24.0
2	No load speed	rpm	6646	6646	6533
3	Nominal speed	rpm	4900	4873	4726
4	No load current	mA	21	10	5
5	Nominal torque (max.continuous torque)	mNm	6.33	6.25	6.15
6	Max. continuous current	mA	751	371	179

#### DISCOUNTS

1 - 5	List Price
6 - 19	-8%
20 +	-14%

#### PART NUMBER

#### Price Each 1-5

HPCMAX110119

£72.32

HPCMAX110124

£72.32

HPCMAX110127

£72.32

8.6



Unit 14, Foxwood Industrial Park, Foxwood Rd. Chesterfield, Derbyshire S41 9RN

Telephone +44(0)1246 268080 Fax +44(0)1246 260003