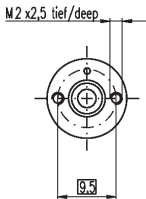
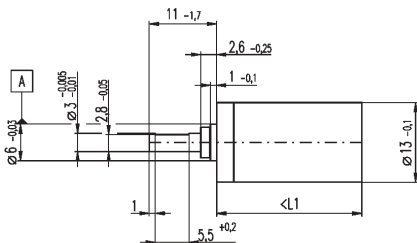


Ø13mm

Gearheads: DC Motors & Gearbox Combinations

0.2 - 0.35 NM



Notes:

13mm planetary gearhead, supplied with fixing kit to suit motors opposite. Pinion supplied loose for fixing to motor shaft using Loctite 603.

Maximum Axial Load: 8N Maximum Radial Load at 6mm from Flange:
1 Stage = 8N, 2Stage = 12N , 3 Stage = 16N, 4 Stage = 20N.

Operating Temperature Range: -15°C to +100°C

Mass: 11-23g.

DISCOUNTS

1 - 5	List Price
6 - 19	-8%
20 +	-14%

PART NUMBER	Ratio	No. of Stages	Length L	Cont. Torque (Nm)	Peak Torque (Nm)	Max Speed	Eff.	Average Backlash	Price Each 1-5
HPCMAX110313	4:1	1	16.0	0.20	0.30	<8000	91%	1.0°	£56.96
HPCMAX110314	17:1	2	19.9	0.20	0.30	<8000	83%	1.2°	£69.92
HPCMAX110315	67:1	3	23.7	0.30	0.45	<8000	75%	1.5°	£80.00
HPCMAX110316	275:1	4	27.6	0.30	0.45	<8000	69%	1.8°	£91.68
HPCMAX110317	1119:1	5	31.4	0.35	0.53	<8000	62%	2.0°	£106.24

