

Ø38mm

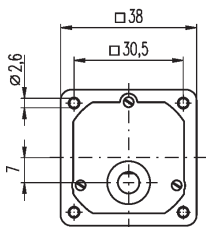
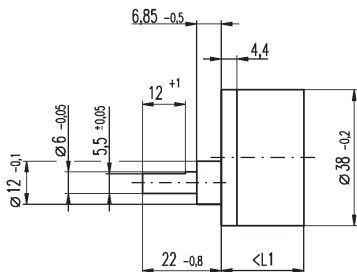
## Gearheads: DC Motors & Gearbox

0.1 - 0.6 NM    Ø6mm Output Shaft

## Combinations



DC Motor & Gearbox Up to 0.6NM



### Notes:

38mm spur gearhead, supplied with fixing kit to suit motors opposite, sleeve bearing output.

Pinion supplied loose with gearhead, requires attachment to motor shaft.

Maximum Axial Load: 30N

Maximum Radial Load at 5mm from Flange: 50N

Operating Temperature Range:  $-5^{\circ}\text{C}$  to  $+65^{\circ}\text{C}$

Mass: 60-75g.

### DISCOUNTS

	List Price
1 - 5	
6 - 19	-8%
20 +	-14%

PART NUMBER	Ratio	No. of Stages	Length L	Cont. Torque (Nm)	Peak Torque (Nm)	Max Speed	Eff.	Average Backlash	Price Each 1-5
HPCMAX110453	18:1	3	23.2	0.2	0.6	5000	73%	1.5°	£48.64
HPCMAX110454	30:1	3	23.2	0.2	0.6	5000	73%	1.5°	£48.64
HPCMAX110455	60:1	4	25.7	0.3	1.8	5000	66%	2.0°	£53.42
HPCMAX110456	100:1	4	25.7	0.6	1.8	5000	66%	2.0°	£53.42
HPCMAX110457	200:1	5	28.2	0.6	1.8	5000	59%	2.5°	£55.60
HPCMAX110458	500:1	6	30.7	0.6	1.8	5000	53%	3.0°	£57.34
HPCMAX110459	900:1	6	30.7	0.6	1.8	5000	53%	3.0°	£57.34

Unit 14, Foxwood Industrial Park, Foxwood Rd. Chesterfield, Derbyshire S41 9RN

Telephone +44(0)1246 268080 Fax +44(0)1246 260003



**8.11**