

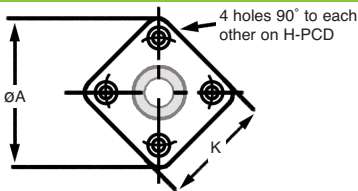
# Shafts & Bearings

## Single Housed Bearing Assembly (Square)

HPCBH02 - With Circlip Retainer



Double Flat



With Circlip Retainer : 3 - 30mm Bores

For fixing, use H holes for a capscrew fixing, or alternatively the THD tapped hole can be used to introduce a fastener from the opposite direction.

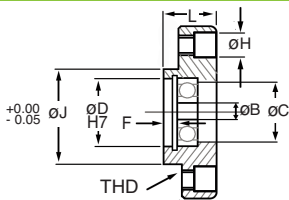
PART NUMBER	$\varnothing B$	$\varnothing D$	$\varnothing C$	L	$\varnothing A$	$\varnothing J$	H
HPCBH0202-40-623	3	$\varnothing 10 \times 7Dp$	$\varnothing 8.5$	11	40	$\varnothing 22 \times 3$	$\varnothing 7.5 \times 4.5Dp$ (M4 Capscrew)
HPCBH0202-40-634	4	$\varnothing 16 \times 8Dp$	$\varnothing 14.0$	11	40	$\varnothing 22 \times 3$	$\varnothing 7.5 \times 4.5Dp$ (M4 Capscrew)
HPCBH0202-40-625	5	$\varnothing 16 \times 8Dp$	$\varnothing 14.0$	11	40	$\varnothing 22 \times 3$	$\varnothing 7.5 \times 4.5Dp$ (M4 Capscrew)
HPCBH0202-40-606	6	$\varnothing 17 \times 9Dp$	$\varnothing 15.0$	11	40	$\varnothing 22 \times 3$	$\varnothing 7.5 \times 4.5Dp$ (M4 Capscrew)
HPCBH0202-58-608	8	$\varnothing 22 \times 11Dp$	$\varnothing 19.5$	16	58	$\varnothing 36 \times 4$	$\varnothing 9.5 \times 5.5Dp$ (M5 Capscrew)
HPCBH0202-58-6000	10	$\varnothing 26 \times 12Dp$	$\varnothing 24.0$	16	58	$\varnothing 36 \times 4$	$\varnothing 9.5 \times 5.5Dp$ (M5 Capscrew)
HPCBH0202-58-6201	12	$\varnothing 32 \times 14Dp$	$\varnothing 28.0$	16	58	$\varnothing 36 \times 4$	$\varnothing 9.5 \times 5.5Dp$ (M5 Capscrew)
HPCBH0202-94-6202	15	$\varnothing 35 \times 18Dp$	$\varnothing 33.0$	25	94	$\varnothing 66 \times 6$	$\varnothing 15.0 \times 8.5Dp$ (M8 Capscrew)
HPCBH0202-94-6003	17	$\varnothing 35 \times 17Dp$	$\varnothing 33.0$	25	94	$\varnothing 66 \times 6$	$\varnothing 15.0 \times 8.5Dp$ (M8 Capscrew)
HPCBH0202-94-6004	20	$\varnothing 42 \times 19Dp$	$\varnothing 38.0$	25	94	$\varnothing 66 \times 6$	$\varnothing 15.0 \times 8.5Dp$ (M8 Capscrew)
HPCBH0202-94-6005	25	$\varnothing 47 \times 19Dp$	$\varnothing 43.0$	25	94	$\varnothing 66 \times 6$	$\varnothing 15.0 \times 8.5Dp$ (M8 Capscrew)
HPCBH0202-94-6006	30	$\varnothing 55 \times 20Dp$	$\varnothing 50.0$	25	94	$\varnothing 66 \times 6$	$\varnothing 15.0 \times 8.5Dp$ (M8 Capscrew)



# Shafts & Bearings

## Single Housed Bearing Assembly (Square)

HPCBH02 - With Circlip Retainer



Chamfered on all external corners

DISCOUNTS	1 - 5	6-19	20-39	40-59	60-99	100 +
	List Price	-5%	-10%	-15%	-20%	-30%
PART NUMBER	H-PCD	THD	K	Bearing XX in Assembly	F	PRICE EACH 1-5
HPCBH0202-40-623	30	Ø4.20 (M5)	30	623zz 3x10x4	3	£29.15
HPCBH0202-40-634	30	Ø4.20 (M5)	30	634zz 4x16x5	3	£29.15
HPCBH0202-40-625	30	Ø4.20 (M5)	30	625zz 5x16x5	3	£29.15
HPCBH0202-40-606	30	Ø4.20 (M5)	30	606zz 6x17x6	3	£29.15
HPCBH0202-58-608	46	Ø5.20 (M6)	44	608zz 8x22x7	4	£36.45
HPCBH0202-58-6000	46	Ø5.20 (M6)	44	6000zz 10x26x8	4	£36.45
HPCBH0202-58-6201	46	Ø5.20 (M6)	44	6201zz 12x32x10	4	£36.45
HPCBH0202-94-6202	78	Ø8.50 (M10)	77	6202zz 15x35x11	7	£58.34
HPCBH0202-94-6003	78	Ø8.50 (M10)	77	6003zz 17x35x10	7	£58.34
HPCBH0202-94-6004	78	Ø8.50 (M10)	77	6004zz 20x42x12	7	£58.34
HPCBH0202-94-6005	78	Ø8.50 (M10)	77	6005zz 25x47x12	7	£58.34
HPCBH0202-94-6006	78	Ø8.50 (M10)	77	6006zz 30x55x13	7	£58.34

Unit 14, Foxwood Industrial Park, Foxwood Rd. Chesterfield, Derbyshire S41 9RN

Telephone +44(0)1246 268080 Fax +44(0)1246 260003



4.79

Shafts & Bearings Single Housed Bearing Assembly