

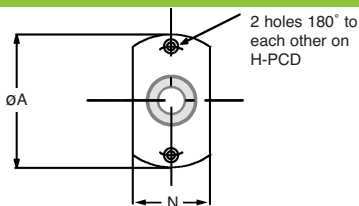
# Shafts & Bearings

## Single Housed Bearing Assembly (Double Flat)

HPCBH01



Double Flat



For fixing, use H holes for a capscrew fixing, or alternatively the THD tapped hole can be used to introduce a fastener from the opposite direction.

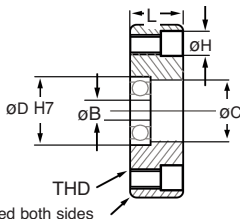
PART NUMBER	$\phi B$	$\phi D$	$\phi C$	L	$\phi A$	H
HPCBH0101-40-623	3	$\phi 10 \times 4 \text{Dp}$	$\phi 8.5$	8	40	$\phi 7.5 \times 4.5 \text{Dp}$ (M4 Capscrew)
HPCBH0101-40-634	4	$\phi 16 \times 5 \text{Dp}$	$\phi 14.0$	8	40	$\phi 7.5 \times 4.5 \text{Dp}$ (M4 Capscrew)
HPCBH0101-40-625	5	$\phi 16 \times 5 \text{Dp}$	$\phi 14.0$	8	40	$\phi 7.5 \times 4.5 \text{Dp}$ (M4 Capscrew)
HPCBH0101-40-606	6	$\phi 17 \times 6 \text{Dp}$	$\phi 15.0$	8	40	$\phi 7.5 \times 4.5 \text{Dp}$ (M4 Capscrew)
HPCBH0101-58-608	8	$\phi 22 \times 7 \text{Dp}$	$\phi 19.5$	12	58	$\phi 9.5 \times 5.5 \text{Dp}$ (M5 Capscrew)
HPCBH0101-58-6000	10	$\phi 26 \times 8 \text{Dp}$	$\phi 24.0$	12	58	$\phi 9.5 \times 5.5 \text{Dp}$ (M5 Capscrew)
HPCBH0101-58-6201	12	$\phi 32 \times 10 \text{Dp}$	$\phi 28.0$	12	58	$\phi 9.5 \times 5.5 \text{Dp}$ (M5 Capscrew)
HPCBH0101-94-6202	15	$\phi 35 \times 11 \text{Dp}$	$\phi 33.0$	18	94	$\phi 15.0 \times 8.5 \text{Dp}$ (M8 Capscrew)
HPCBH0101-94-6003	17	$\phi 35 \times 10 \text{Dp}$	$\phi 33.0$	18	94	$\phi 15.0 \times 8.5 \text{Dp}$ (M8 Capscrew)
HPCBH0101-94-6004	20	$\phi 42 \times 12 \text{Dp}$	$\phi 38.0$	18	94	$\phi 15.0 \times 8.5 \text{Dp}$ (M8 Capscrew)
HPCBH0101-94-6005	25	$\phi 47 \times 12 \text{Dp}$	$\phi 43.0$	18	94	$\phi 15.0 \times 8.5 \text{Dp}$ (M8 Capscrew)
HPCBH0101-94-6006	30	$\phi 55 \times 13 \text{Dp}$	$\phi 50.0$	18	94	$\phi 15.0 \times 8.5 \text{Dp}$ (M8 Capscrew)

# Shafts & Bearings

## Single Housed Bearing Assembly (Double Flat)

HPCBH01

MATERIAL :	
HOUSING	080 M40 (C45) STEEL Zinc Plated Natural
BEARING	Steel
SHIELDS (zz)	Steel



DISCOUNTS	1 - 5	6-19	20-39	40-59	60-99	100 +
	List Price	-5%	-10%	-15%	-20%	-30%

PART NUMBER	H-PCD	THD	Bearing XX in Assembly	N	PRICE EACH 1-5
HPCBH0101-40-623	30	Ø4.20 (M5)	623zz 3x10x4	24	£23.20
HPCBH0101-40-634	30	Ø4.20 (M5)	634zz 4x16x5	24	£23.20
HPCBH0101-40-625	30	Ø4.20 (M5)	625zz 5x16x5	24	£23.20
HPCBH0101-40-606	30	Ø4.20 (M5)	606zz 6x17x6	24	£23.20
HPCBH0101-58-608	46	Ø5.20 (M6)	608zz 8x22x7	40	£28.78
HPCBH0101-58-6000	46	Ø5.20 (M6)	6000zz 10x26x8	40	£28.78
HPCBH0101-58-6201	46	Ø5.20 (M6)	6201zz 12x32x10	40	£28.78
HPCBH0101-94-6202	78	Ø8.50 (M10)	6202zz 15x35x11	67	£40.45
HPCBH0101-94-6003	78	Ø8.50 (M10)	6003zz 17x35x10	67	£40.45
HPCBH0101-94-6004	78	Ø8.50 (M10)	6004zz 20x42x12	67	£40.45
HPCBH0101-94-6005	78	Ø8.50 (M10)	6005zz 25x47x12	67	£40.45
HPCBH0101-94-6006	78	Ø8.50 (M10)	6006zz 30x55x13	67	£40.45