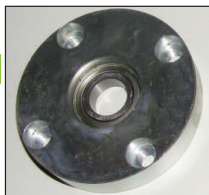


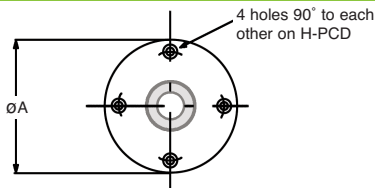
# Shafts & Bearings

## Single Housed Bearing Assembly (Round)

HPCBH01



Round



For fixing, use H holes for a capscrew fixing, or alternatively the THD tapped hole can be used to introduce a fastener from the opposite direction.

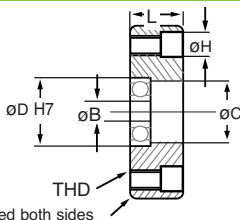
PART NUMBER	$\varnothing B$	$\varnothing D$	$\varnothing C$	L	$\varnothing A$	H
HPCBH0100-40-623	3	$\varnothing 10 \times 4 \text{Dp}$	$\varnothing 8.5$	8	40	$\varnothing 7.5 \times 4.5 \text{Dp}$ (M4 Capscrew)
HPCBH0100-40-634	4	$\varnothing 16 \times 5 \text{Dp}$	$\varnothing 14.0$	8	40	$\varnothing 7.5 \times 4.5 \text{Dp}$ (M4 Capscrew)
HPCBH0100-40-625	5	$\varnothing 16 \times 5 \text{Dp}$	$\varnothing 14.0$	8	40	$\varnothing 7.5 \times 4.5 \text{Dp}$ (M4 Capscrew)
HPCBH0100-40-606	6	$\varnothing 17 \times 6 \text{Dp}$	$\varnothing 15.0$	8	40	$\varnothing 7.5 \times 4.5 \text{Dp}$ (M4 Capscrew)
HPCBH0100-58-608	8	$\varnothing 22 \times 7 \text{Dp}$	$\varnothing 19.5$	12	58	$\varnothing 9.5 \times 5.5 \text{Dp}$ (M5 Capscrew)
HPCBH0100-58-6000	10	$\varnothing 26 \times 8 \text{Dp}$	$\varnothing 24.0$	12	58	$\varnothing 9.5 \times 5.5 \text{Dp}$ (M5 Capscrew)
HPCBH0100-58-6201	12	$\varnothing 32 \times 10 \text{Dp}$	$\varnothing 28.0$	12	58	$\varnothing 9.5 \times 5.5 \text{Dp}$ (M5 Capscrew)
HPCBH0100-94-6202	15	$\varnothing 35 \times 11 \text{Dp}$	$\varnothing 33.0$	18	94	$\varnothing 15.0 \times 8.5 \text{Dp}$ (M8 Capscrew)
HPCBH0100-94-6003	17	$\varnothing 35 \times 10 \text{Dp}$	$\varnothing 33.0$	18	94	$\varnothing 15.0 \times 8.5 \text{Dp}$ (M8 Capscrew)
HPCBH0100-94-6004	20	$\varnothing 42 \times 12 \text{Dp}$	$\varnothing 38.0$	18	94	$\varnothing 15.0 \times 8.5 \text{Dp}$ (M8 Capscrew)
HPCBH0100-94-6005	25	$\varnothing 47 \times 12 \text{Dp}$	$\varnothing 43.0$	18	94	$\varnothing 15.0 \times 8.5 \text{Dp}$ (M8 Capscrew)
HPCBH0100-94-6006	30	$\varnothing 55 \times 13 \text{Dp}$	$\varnothing 50.0$	18	94	$\varnothing 15.0 \times 8.5 \text{Dp}$ (M8 Capscrew)

# Shafts & Bearings

## Single Housed Bearing Assembly ( Round )

HPCBH01

<b>MATERIAL :</b>	
<b>HOUSING</b>	080 M40 (C45) STEEL Zinc Plated Natural
<b>BEARING</b>	Steel
<b>SHIELDS (zz)</b>	Steel



Chamfered both sides

DISCOUNTS	1 - 5	6-19	20-39	40-59	60-99	100 +
	List Price	-5%	-10%	-15%	-20%	-30%

PART NUMBER	H-PCD	THD	Bearing XX in Assembly	PRICE EACH 1-5
HPCBH0100-40-623	30	Ø4.20 (M5)	623zz 3x10x4	£20.53
HPCBH0100-40-634	30	Ø4.20 (M5)	634zz 4x16x5	£20.53
HPCBH0100-40-625	30	Ø4.20 (M5)	625zz 5x16x5	£20.53
HPCBH0100-40-606	30	Ø4.20 (M5)	606zz 6x17x6	£20.53
HPCBH0100-58-608	46	Ø5.20 (M6)	608zz 8x22x7	£25.49
HPCBH0100-58-6000	46	Ø5.20 (M6)	6000zz 10x26x8	£25.49
HPCBH0100-58-6201	46	Ø5.20 (M6)	6201zz 12x32x10	£25.49
HPCBH0100-94-6202	78	Ø8.50 (M10)	6202zz 15x35x11	£40.45
HPCBH0100-94-6003	78	Ø8.50 (M10)	6003zz 17x35x10	£40.45
HPCBH0100-94-6004	78	Ø8.50 (M10)	6004zz 20x42x12	£40.45
HPCBH0100-94-6005	78	Ø8.50 (M10)	6005zz 25x47x12	£40.45
HPCBH0100-94-6006	78	Ø8.50 (M10)	6006zz 30x55x13	£40.45

