

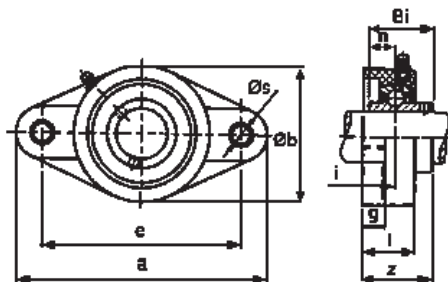
2 Bolt Flange

PBT High-grade Glass-filled Thermoplastic Polyester



DISCOUNTS

Quantity	List Price
1 - 5	
6-19	-12%
20-39	-25%
40-59	-33%
60-99	-37%
100-199	-42%
200-499	-45%
500+	-48%



PART NUMBER	Bearing Bore Dia.		Dimensions (mm)				
	mm	inch	a	e	b	g	l
HPCNFL204S/S	20	3/4	113	90	65	11.4	26.5
HPCNFL205S/S	25	13/16, 7/8, 15/16, 1	131	99	69.5	13.5	29.1
HPCNFL206S/S	30	1 1/16, 1 1/8, 1 3/16, 1 1/4	148	117	80	13.3	30.5
HPCNFL207S/S	35	1 1/4, 1 5/16, 1 3/8, 1 7/16	164	130	90	16.1	32.8
HPCNFL208S/S	40	1 1/2, 1 9/16	176	144	100	20	37.5

PART NUMBER	Dimensions					Weight (kg)	Max. Torque		PRICE EACH 1-5
	s	z	i	Bi	n		Bolt Dia.	Nm	
HPCNFL204S/S	11	33.7	15.4	31	12.7	0.08	M10	18	£49.76
HPCNFL205S/S	11	36.7	17	34	14.3	0.10	M10	25	£54.60
HPCNFL206S/S	11	41.2	19	38.1	15.9	0.13	M10	30	£77.56
HPCNFL207S/S	13	43.4	18	42.9	17.5	0.16	M12	35	£92.18
HPCNFL208S/S	14	51.7	21.5	49.2	19	0.24	M12	40	£102.48

Material

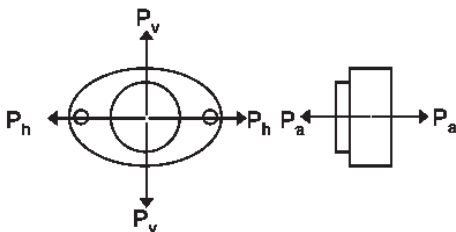
PBT High-grade Glass-filled Thermoplastic
Polyester

Shafts & Bearings

2 Bolt Flange

- *Material: PBT*
- *Interchangeable with Cast Iron Housing*
- *Suitable for temperatures from -35C° to 102C°*
- *Stainless steel grease nipples as standard*
- *FDA approved*
- *Closed end cover as standard*
- *Solid base*

Housing tear-out strength



MODE OF LOAD	Breaking Point of Housing (N)				
	204	205	206	207	208
P_h	11750	11375	16450	16900	17350
P_v	11000	13850	13350	13950	14050
P_a	8500	11100	14200	14900	15150

