

Gearboxes

Output Torque Range
2.3Nm to 20Nm

Ratio
1:1 - 40:1

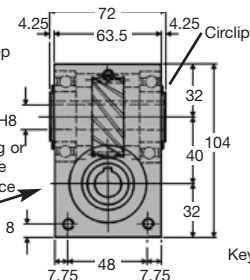
Crossed Helical, Reduction (Hardened Gears) HPCE40

CROSSED HELICAL, REDUCTION GEARBOX HPCE40

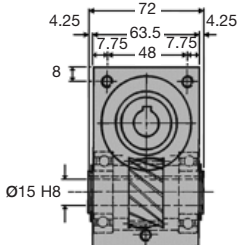


(12) tapped
M6 x 14 deep

Ø15 H8
Pressure plug or
Grease nipple
fitted on 1 face



Keyways 5mm Js9



WEIGHT	1.67 Kg
BACKLASH	1° approx
HOURS LIFE	12000 hr
MAX INPUT SPEED	4000 rpm
MATERIAL:	
CASE MAT'L	Aluminium HE30TF
GEAR MAT'L	655M13 Case Hardened
GREASED FOR LIFE	Shell Alvania

N.m.	RPM Input	Reduction ratio				
		1:1	2:1	3:1	4:1	5:1
Output Torque	3000	2.3	2.3	2.3	2.3	2.3
	2000	2.8	2.8	2.8	2.8	2.8
	1000	3.8	3.8	3.8	3.8	3.8
	500	5.0	5.0	5.0	5.0	5.0
	100	8.0	8.0	8.0	8.0	8.0
	50	9.0	9.0	9.0	9.0	9.0
	10	10.0	10.0	10.0	10.0	10.0

DISCOUNTS	
1 - 5	List Price
6 - 19	-5%
20 - 49	-10%
50 - 99	-15%
100 +	-20%

PART NUMBER	Ratio	Type	% Effi. @ 1000 Rpm	Max I/P Speed	Max O/P Speed	Back-drive	PRICE EACH 1-5
HPCE40-1	1:1	Helical	92	4000	4000	YES	£264.25
HPCE40-2	2:1	Helical	90	4000	2000	YES	£264.25
HPCE40-3	3:1	Helical	89	4000	1333	YES	£264.25
HPCE40-4	4:1	Helical	88	4000	1000	YES	£264.25
HPCE40-5	5:1	Helical	80	4000	800	YES	£264.25
HPCE40-SP	1:1 - 40:1	Special Ratios: Replace SP with required ratio					£334.25
HPCE40-SPA	1:1 - 40:1	Low Backlash ≤ 30'. Replace SP with required ratio					£334.25
HPCE40-SPLH	1:1 - 40:1	Left Hand Helicals: Replace SP with required ratio					£334.25

Output Shafts: HPCE40-X (Single), HPCE40-DX (Double): See page 1.35

Special bores and other modifications are available. Please contact Technical Sales department.

Testing in your application is necessary. You will need to assess duty, cycles and confirm gearbox suitability with your own calculations. Torque figures are to be used for guidance only.

1.28



Unit 14, Foxwood Industrial Park, Foxwood Rd. Chesterfield, Derbyshire S41 9RN

Telephone +44(0)1246 268080 Fax +44(0)1246 260003

Output Torque Range
2.3Nm to 20Nm

Ratio
1:1 - 40:1

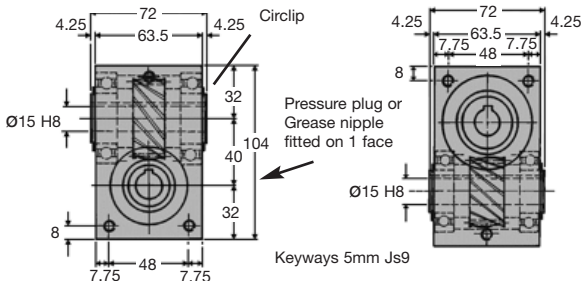
Gearboxes

HPCE40

Wormwheel, Reduction (Hardened Worm)

WEIGHT	1.67 Kg
BACKLASH	1° approx
HOURS LIFE	12000 hr
MATERIAL:	
CASE MAT'L	Aluminium HE30TF
WORM MAT'L	655M13 Case Hardened
WHEEL MAT'L	Aluminium Bronze CA104
GREASED FOR LIFE	Shell Gadus

(12) tapped
M6 x 14 deep



N.m.	RPM Input	Reduction ratio			
		8:1	10:1	20:1	40:1
Output Torque	3000	-	-	-	-
	2000	-	-	-	-
	1000	7.3	8.0	8.8	9.7
	500	10.7	11.3	12.2	13.1
	100	14.2	15.0	15.8	16.7
	50	17.1	17.3	17.7	18.2
	10	19.5	19.6	19.8	20.0

DISCOUNTS

Quantity	List Price
1 - 5	
6 - 19	-5%
20 - 49	-10%
50 - 99	-15%
100 +	-20%

PART NUMBER	Ratio	Type	% Effi. @ 1000 Rpm	Max I/P Speed	Max O/P Speed	Back-drive	PRICE EACH 1-5	
HPCE40-8	8:1	worm wheel	80	1500	187	YES	£264.25	
HPCE40-10	10:1	worm wheel	73	1500	150	YES	£264.25	
HPCE40-20	20:1	worm wheel	67	1500	75	NO	£264.25	
HPCE40-40	40:1	worm wheel	60	1500	37	NO	£264.25	
HPCE40-SP	1:1 - 40:1	Special Ratios: Replace SP with required ratio						£334.25
HPCE40-SPA	1:1 - 40:1	Low Backlash ≤ 30'. Replace SP with required ratio						£334.25
HPCE40-SPLH	1:1 - 40:1	Left Hand Helicals: Replace SP with required ratio						£334.25

Output Shafts: HPCE40-X (Single), HPCE40-DX (Double): See page 1.35

Special bores and other modifications are available. Please contact Technical Sales department.

Testing in your application is necessary. You will need to assess duty, cycles and confirm gearbox suitability with your own calculations. Torque figures are to be used for guidance only.

Unit 14, Foxwood Industrial Park, Foxwood Rd. Chesterfield, Derbyshire S41 9RN

Telephone +44(0)1246 268080 Fax +44(0)1246 260003



1.29

Gearboxes CROSSED HELICAL, REDUCTION GEARBOX HPCE40