

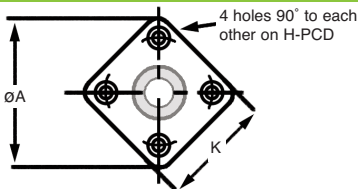
Shafts & Bearings

Double Housed Bearing Assembly (Square)

HPCBH04 - With Circlip Retainer



Square



With Circlip Retainer : 3 - 30mm Bores

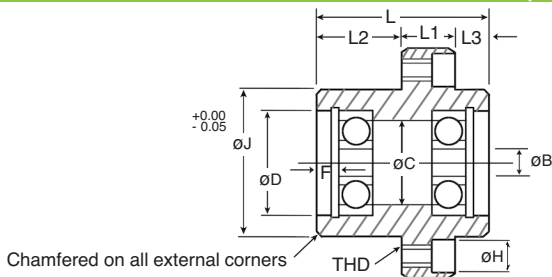
For fixing, use H holes for a capscrew fixing, or alternatively the THD tapped hole can be used to introduce a fastener from the opposite direction.

PART NUMBER	$\varnothing B$	$\varnothing D$	$\varnothing C$	L	L1	L2	L3	H
HPCBH0402-40-623	3	$\varnothing 10 \times 7 \text{Dp}$	$\varnothing 8.5$	22	8	10	4	$\varnothing 7.5 \times 4.5 \text{Dp}$ (M4 Capscrew)
HPCBH0402-40-634	4	$\varnothing 16 \times 8 \text{Dp}$	$\varnothing 14.0$	22	8	10	4	$\varnothing 7.5 \times 4.5 \text{Dp}$ (M4 Capscrew)
HPCBH0402-40-625	5	$\varnothing 16 \times 8 \text{Dp}$	$\varnothing 14.0$	22	8	10	4	$\varnothing 7.5 \times 4.5 \text{Dp}$ (M4 Capscrew)
HPCBH0402-40-606	6	$\varnothing 17 \times 9 \text{Dp}$	$\varnothing 15.0$	22	8	10	4	$\varnothing 7.5 \times 4.5 \text{Dp}$ (M4 Capscrew)
HPCBH0402-58-608	8	$\varnothing 22 \times 11 \text{Dp}$	$\varnothing 19.5$	36	12	18	6	$\varnothing 9.5 \times 5.5 \text{Dp}$ (M5 Capscrew)
HPCBH0402-58-6000	10	$\varnothing 26 \times 12 \text{Dp}$	$\varnothing 24.0$	36	12	18	6	$\varnothing 9.5 \times 5.5 \text{Dp}$ (M5 Capscrew)
HPCBH0402-58-6201	12	$\varnothing 32 \times 14 \text{Dp}$	$\varnothing 28.0$	36	12	18	6	$\varnothing 9.5 \times 5.5 \text{Dp}$ (M5 Capscrew)
HPCBH0402-94-6202	15	$\varnothing 35 \times 18 \text{Dp}$	$\varnothing 33.0$	51	19	24	8	$\varnothing 15.0 \times 8.5 \text{Dp}$ (M8 Capscrew)
HPCBH0402-94-6003	17	$\varnothing 35 \times 17 \text{Dp}$	$\varnothing 33.0$	51	19	24	8	$\varnothing 15.0 \times 8.5 \text{Dp}$ (M8 Capscrew)
HPCBH0402-94-6004	20	$\varnothing 42 \times 19 \text{Dp}$	$\varnothing 38.0$	51	19	24	8	$\varnothing 15.0 \times 8.5 \text{Dp}$ (M8 Capscrew)
HPCBH0402-94-6005	25	$\varnothing 47 \times 19 \text{Dp}$	$\varnothing 43.0$	51	19	24	8	$\varnothing 15.0 \times 8.5 \text{Dp}$ (M8 Capscrew)
HPCBH0402-94-6006	30	$\varnothing 55 \times 20 \text{Dp}$	$\varnothing 50.0$	51	19	24	8	$\varnothing 15.0 \times 8.5 \text{Dp}$ (M8 Capscrew)

Shafts & Bearings

Double Housed Bearing Assembly (Square)

HPCBH04 - With Circlip Retainer



DISCOUNTS	1 - 5	6-19	20-39	40-59	60-99	100 +
	List Price		-5%	-10%	-15%	-20%

PART NUMBER	ØA	H-PCD	THD	K	Bearing XX in Assembly	ØJ	F	PRICE EACH 1-5
HPCBH0402-40-623	40	30	Ø4.20 (M5)	30	623zz 3x10x4	Ø22	3	£55.12
HPCBH0402-40-634	40	30	Ø4.20 (M5)	30	634zz 4x16x5	Ø22	3	£55.12
HPCBH0402-40-625	40	30	Ø4.20 (M5)	30	625zz 5x16x5	Ø22	3	£55.12
HPCBH0402-40-606	40	30	Ø4.20 (M5)	30	606zz 6x17x6	Ø22	3	£55.12
HPCBH0402-58-608	58	46	Ø5.20 (M6)	44	608zz 8x22x7	Ø36	4	£68.94
HPCBH0402-58-6000	58	46	Ø5.20 (M6)	44	6000zz 10x26x8	Ø36	4	£68.94
HPCBH0402-58-6201	58	46	Ø5.20 (M6)	44	6201zz 12x32x10	Ø36	4	£68.94
HPCBH0402-94-6202	94	78	Ø8.50 (M10)	77	6202zz 15x35x11	Ø62	7	£110.30
HPCBH0402-94-6003	94	78	Ø8.50 (M10)	77	6003zz 17x35x10	Ø62	7	£110.30
HPCBH0402-94-6004	94	78	Ø8.50 (M10)	77	6004zz 20x42x12	Ø62	7	£110.30
HPCBH0402-94-6005	94	78	Ø8.50 (M10)	77	6005zz 25x47x12	Ø62	7	£110.30
HPCBH0402-94-6006	94	78	Ø8.50 (M10)	77	6006zz 30x55x13	Ø62	7	£110.30