

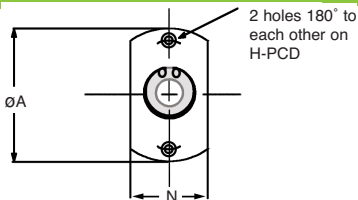
# Shafts & Bearings

## Double Housed Bearing Assembly (Double Flat)

HPCBH04 - With Circlip Retainer



Double Flat



With Circlip Retainer : 3 - 30mm Bores

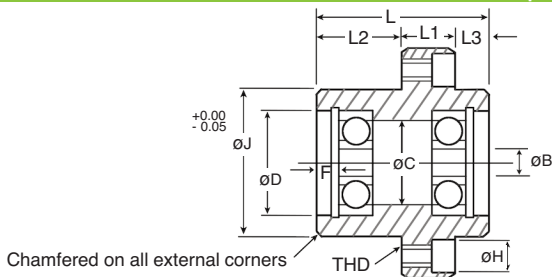
For fixing, use H holes for a capscrew fixing, or alternatively the THD tapped hole can be used to introduce a fastener from the opposite direction.

PART NUMBER	$\phi B$	$\phi D$	$\phi C$	L	L1	L2	L3	H
HPCBH0401-40-623	3	$\phi 10 \times 7 \text{Dp}$	$\phi 8.5$	22	8	10	4	$\phi 7.5 \times 4.5 \text{Dp}$ (M4 Capscrew)
HPCBH0401-40-634	4	$\phi 16 \times 8 \text{Dp}$	$\phi 14.0$	22	8	10	4	$\phi 7.5 \times 4.5 \text{Dp}$ (M4 Capscrew)
HPCBH0401-40-625	5	$\phi 16 \times 8 \text{Dp}$	$\phi 14.0$	22	8	10	4	$\phi 7.5 \times 4.5 \text{Dp}$ (M4 Capscrew)
HPCBH0401-40-606	6	$\phi 17 \times 9 \text{Dp}$	$\phi 15.0$	22	8	10	4	$\phi 7.5 \times 4.5 \text{Dp}$ (M4 Capscrew)
HPCBH0401-58-608	8	$\phi 22 \times 11 \text{Dp}$	$\phi 19.5$	36	12	18	6	$\phi 9.5 \times 5.5 \text{Dp}$ (M5 Capscrew)
HPCBH0401-58-6000	10	$\phi 26 \times 12 \text{Dp}$	$\phi 24.0$	36	12	18	6	$\phi 9.5 \times 5.5 \text{Dp}$ (M5 Capscrew)
HPCBH0401-58-6201	12	$\phi 32 \times 14 \text{Dp}$	$\phi 28.0$	36	12	18	6	$\phi 9.5 \times 5.5 \text{Dp}$ (M5 Capscrew)
HPCBH0401-94-6202	15	$\phi 35 \times 18 \text{Dp}$	$\phi 33.0$	51	19	24	8	$\phi 15.0 \times 8.5 \text{Dp}$ (M8 Capscrew)
HPCBH0401-94-6003	17	$\phi 35 \times 17 \text{Dp}$	$\phi 33.0$	51	19	24	8	$\phi 15.0 \times 8.5 \text{Dp}$ (M8 Capscrew)
HPCBH0401-94-6004	20	$\phi 42 \times 19 \text{Dp}$	$\phi 38.0$	51	19	24	8	$\phi 15.0 \times 8.5 \text{Dp}$ (M8 Capscrew)
HPCBH0401-94-6005	25	$\phi 47 \times 19 \text{Dp}$	$\phi 43.0$	51	19	24	8	$\phi 15.0 \times 8.5 \text{Dp}$ (M8 Capscrew)
HPCBH0401-94-6006	30	$\phi 55 \times 20 \text{Dp}$	$\phi 50.0$	51	19	24	8	$\phi 15.0 \times 8.5 \text{Dp}$ (M8 Capscrew)

# Shafts & Bearings

## Double Housed Bearing Assembly ( Double Flat)

HPCBH04 - With Circlip Retainer



DISCOUNTS	1 - 5	6-19	20-39	40-59	60-99	100 +
	List Price		-5%	-10%	-15%	-20%

PART NUMBER	ØA	H-PCD	THD	Bearing XX in Assembly	N	ØJ	F	PRICE EACH 1-5
HPCBH0401-40-623	40	30	Ø4.20 (M5)	623zz 3x10x4	24	Ø22	3	£52.69
HPCBH0401-40-634	40	30	Ø4.20 (M5)	634zz 4x16x5	24	Ø22	3	£52.69
HPCBH0401-40-625	40	30	Ø4.20 (M5)	625zz 5x16x5	24	Ø22	3	£52.69
HPCBH0401-40-606	40	30	Ø4.20 (M5)	606zz 6x17x6	24	Ø22	3	£52.69
HPCBH0401-58-608	58	46	Ø5.20 (M6)	608zz 8x22x7	40	Ø36	4	£65.35
HPCBH0401-58-6000	58	46	Ø5.20 (M6)	6000zz 10x26x8	40	Ø36	4	£65.35
HPCBH0401-58-6201	58	46	Ø5.20 (M6)	6201zz 12x32x10	40	Ø36	4	£65.35
HPCBH0401-94-6202	94	78	Ø8.50 (M10)	6202zz 15x35x11	67	Ø62	7	£103.70
HPCBH0401-94-6003	94	78	Ø8.50 (M10)	6003zz 17x35x10	67	Ø62	7	£103.70
HPCBH0401-94-6004	94	78	Ø8.50 (M10)	6004zz 20x42x12	67	Ø62	7	£103.70
HPCBH0401-94-6005	94	78	Ø8.50 (M10)	6005zz 25x47x12	67	Ø62	7	£103.70
HPCBH0401-94-6006	94	78	Ø8.50 (M10)	6006zz 30x55x13	67	Ø62	7	£103.70