

Shafts & Bearings

Material

Square Flange Units

Cast Iron Housing
Steel Bearing



DISCOUNTS

	List Price
1 - 5	
6-19	-12%
20-39	-25%
40-59	-33%
60-99	-37%
100-199	-42%
200-399	-48%
400-499	-51%
500+	-55%

Shafts & Bearings Square Flange

PART NUMBER	Shaft Dia. (d)		Dimensions (mm)			
	(in.)	(mm)	L	J	A2	A1
HPCUCF202	-	15	76	54	15	11
HPCUCF202-10	5/8	-	76	54	15	11
HPCUCF203	-	17	76	54	15	11
HPCUCF204-12	3/4	-	86	64	15	11
HPCUCF204	-	20	86	64	15	11
HPCUCF205-14	7/8	-	95	70	16	13
HPCUCF205	-	25	95	70	16	13
HPCUCF205-16	1	-	95	70	16	13
HPCUCF206-18	1 1/8	-	108	83	18	13
HPCUCF206	-	30	108	83	18	13
HPCUCF207-20	1 1/4	-	117	92	19	15
HPCUCF207-22	1 3/8	-	117	92	19	15
HPCUCF207	-	35	117	92	19	15
HPCUCF208-24	1 1/2	-	130	102	21	15
HPCUCF208	-	40	130	102	21	15
HPCUCF209-26	1 5/8	-	137	105	22	16
HPCUCF209-28	1 3/4	-	137	105	22	16
HPCUCF209	-	45	137	105	22	16
HPCUCF210-30	1 7/8	-	143	111	22	16
HPCUCF210	-	50	143	111	22	16
HPCUCF211-32	2	-	162	130	25	18

4.64



Unit 14, Foxwood Industrial Park, Foxwood Rd, Chesterfield, Derbyshire S41 9RN

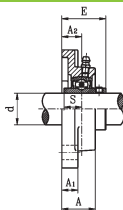
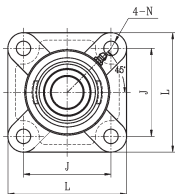
Telephone +44(0)1246 268080 Fax +44(0)1246 260003

Material

Cast Iron Housing
Steel Bearing

Shafts & Bearings

Square Flange Units



PART NUMBER	Dimensions (mm)				Bolt Size	Mass (kg)	PRICE EACH 1-5
	A	E	N	S			
HPCUCF202	25.5	30.9	11.5	11.5	M10	0.500	£17.64
HPCUCF202-10	25.5	30.9	11.5	11.5	M10	0.500	£17.29
HPCUCF203	25.5	30.9	11.5	11.5	M10	0.500	£17.64
HPCUCF204-12	25.5	33.3	11.5	12.7	M10	0.610	£13.15
HPCUCF204	25.5	33.3	11.5	12.7	M10	0.610	£13.23
HPCUCF205-14	27	35.7	11.5	14.3	M10	0.800	£15.79
HPCUCF205	27	35.7	11.5	14.3	M10	0.800	£15.40
HPCUCF205-16	27	35.7	11.5	14.3	M10	0.800	£15.79
HPCUCF206-18	31	40.2	11.5	15.9	M10	1.070	£18.54
HPCUCF206	31	40.2	11.5	15.9	M10	1.070	£19.77
HPCUCF207-20	34	44.4	14	17.5	M12	1.400	£21.57
HPCUCF207-22	34	44.4	14	17.5	M12	1.400	£21.57
HPCUCF207	34	44.4	14	17.5	M12	1.400	£23.23
HPCUCF208-24	36	51.2	14	19	M12	1.800	£24.53
HPCUCF208	36	51.2	14	19	M12	1.800	£27.68
HPCUCF209-26	38	52.2	16	19	M14	2.200	£28.08
HPCUCF209-28	38	52.2	16	19	M14	2.200	£28.08
HPCUCF209	38	52.2	16	19	M14	2.200	£30.98
HPCUCF210-30	40	54.6	18	19	M16	2.400	£44.30
HPCUCF210	40	54.6	18	19	M16	2.400	£36.51
HPCUCF211-32	43	58.4	18	22.2	M16	3.500	£42.10



Shafts & Bearings

Material

Square Flange Units

Cast Iron Housing
Steel Bearing



DISCOUNTS

	List Price
1 - 5	-
6-19	-12%
20-39	-25%
40-59	-33%
60-99	-37%
100-199	-42%
200-399	-48%
400-499	-51%
500+	-55%

Shafts & Bearings Square Flange

PART NUMBER	Shaft Dia. (d)		Dimensions (mm)			
	(in.)	(mm)	L	J	A2	A1
HPCUCF211-34	2 1/8	-	162	130	25	18
HPCUCF211	-	55	162	130	25	18
HPCUCF212-36	2 1/4	-	175	143	29	18
HPCUCF212	-	60	175	143	29	18
HPCUCF212-38	2 3/8	-	175	143	29	18
HPCUCF213-40	2 1/2	-	187	149	30	22
HPCUCF213	-	65	187	149	30	22
HPCUCF214-44	2 3/4	-	193	152	31	22
HPCUCF214	-	70	193	152	31	22
HPCUCF215	-	75	200	159	34	22
HPCUCF215-48	3	-	200	159	34	22

'Never Knowingly Outpriced'

4.66



Unit 14, Foxwood Industrial Park, Foxwood Rd, Chesterfield, Derbyshire S41 9RN

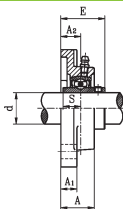
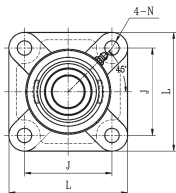
Telephone +44(0)1246 268080 Fax +44(0)1246 260003

Material

Cast Iron Housing
Steel Bearing

Shafts & Bearings

Square Flange Units



PART NUMBER	Dimensions (mm)				Bolt Size	Mass (kg)	PRICE EACH 1-5
	A	E	N	S			
HPCUCF211-34	43	58.4	18	22.2	M16	3.500	£42.10
HPCUCF211	43	58.4	18	22.2	M16	3.500	£50.48
HPCUCF212-36	48	68.7	18	25.4	M16	4.200	£51.29
HPCUCF212	48	68.7	18	25.4	M16	4.200	£63.38
HPCUCF212-38	48	68.7	18	25.4	M16	4.200	£51.29
HPCUCF213-40	50	69.7	18	25.4	M16	5.300	£86.23
HPCUCF213	50	69.7	18	25.4	M16	5.300	£90.15
HPCUCF214-44	54	75.4	18	30.2	M16	5.900	£98.20
HPCUCF214	54	75.4	18	30.2	M16	5.900	£108.22
HPCUCF215	56	78.5	18	33.3	M16	6.300	£156.05
HPCUCF215-48	56	78.5	18	33.3	M16	6.300	£135.05

'Never Knowingly Outpriced'

Shafts & Bearings Square Flange

