

Couplings

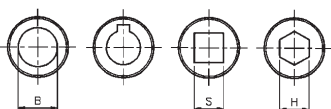
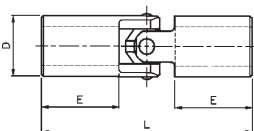
Single Universal Joints

Material
Steel & Stainless Steel



DISCOUNTS

1 - 9	List Price
10-24	-2%
25-49	-4%
50 +	-6%



* All bores supplied solid (unbored as standard).

Couplings Universal Joints

PART NUMBER		D	L	E Min	* B	'B' Max					PRICE EACH 1-5	
Steel	Stainless					MB	WK	S	H	SBT	Steel	Stainless
HPCME16	HPCSME16	16	58	19	8	10	8	-	-	45	£56.58	£128.43
HPCME20	HPCSME20	20	64	19	10	13	11	10	10	88	£57.40	£140.63
HPCME25	HPCSME25	25	86	26	12	16	14	12	12	180	£62.17	£149.82
HPCME32	HPCSME32	32	95	28	16	22	18	16	16	405	£76.49	£180.46
HPCME40	HPCSME40	40	108	30	20	25	22	19	19	860	£91.81	£235.50
HPCME45	HPCSME45	45	127	36	20	30	25	22	22	1250	£116.99	£302.74
HPCME50	HPCSME50	50	140	41	25	35	30	25	25	1730	£194.13	£394.55
HPCME63	HPCSME63	63	178	52	32	45	35	32	32	3400	£259.19	£556.49

B : Standard round bore available to order,
if required please add an additional £15.00 per end

MB : Max round bore available

WK : Max round bore available with keyway, please contact sales for a quote

S : Max square bore available, please contact sales for a quote

H : Max hexagon bore available, please contact sales for a quote

SBT: Static Breaking Torque (Nm)

3.86



Unit 14, Foxwood Industrial Park, Foxwood Rd. Chesterfield, Derbyshire S41 9RN

Telephone +44(0)1246 268080 Fax +44(0)1246 260003