

Couplings

Bore Reducers



General description

Bore adaptors offer a convenient way of adapting a coupling to a variety of shaft diameters, typically at the R & D stage. A range of motor options, for example, can be accommodated with one coupling and a selection of bore reducers.

When fitted to set screw hubs, adaptors prevent the screws from scoring the shafts and permit repeated re-positioning and easy removal of the coupling.

The adaptors feature a feathered head, which sits in the chamfer at the bore entry and prevents over-insertion.

Type	HPC251	HPC253	HPC254	HPC255
øD	5	6.35	8	8
L	4.3	6.6	5.8	8.1
To fit bores coded	20	24	28	28
minor øB	Adaptor ref.			
2	HPC251-2	HPC253-2		
3	HPC251-3	HPC253-3	HPC254-3	HPC255-3
3.05	HPC251-3.05	HPC253-3.05	HPC254-3.05	HPC255-3.05
3.18	HPC251-3.18	HPC253-3.18	HPC254-3.18	HPC255-3.18
4	HPC251-4	HPC253-4	HPC254-4	HPC255-4
4.76		HPC253-4.76	HPC254-4.76	HPC255-4.76
5		HPC253-5	HPC254-5	HPC255-5
6			HPC254-6	HPC255-6
material	brass			

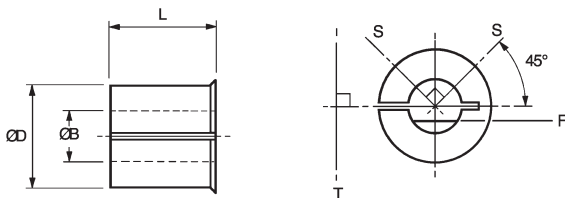
Couplings

Bore Reducers

DISCOUNTS

1 - 9	10 +
List Price	-8%

PART NUMBER	PRICE EACH 1-9	PART NUMBER	PRICE EACH 1-9	PART NUMBER	PRICE EACH 1-9	PART NUMBER	PRICE EACH 1-9
HPC251-2	£3.31	HPC253-2	£3.31	HPC254-3	£3.31	HPC255-3	£3.31
HPC251-3	£3.31	HPC253-3	£3.31	HPC254-3.05	£3.31	HPC255-3.05	£3.31
HPC251-3.05	£3.31	HPC253-3.05	£3.31	HPC254-3.18	£3.31	HPC255-3.18	£3.31
HPC251-3.18	£3.31	HPC253-3.18	£3.31	HPC254-4	£3.31	HPC255-4	£3.31
HPC251-4	£3.31	HPC253-4	£3.31	HPC254-4.76	£3.31	HPC255-4.76	£3.31
-	-	HPC253-4.76	£3.31	HPC254-5	£3.31	HPC255-5	£3.31
-	-	HPC253-5	£3.31	HPC254-6	£3.31	HPC255-6	£3.31



Bore For optimum fastening, install bore reducers as shown.

'S' represents screws in set screw hub.

'T' represents tangential screw in clamp hub.

'F' shows recommended orientation of flattened shaft in set screw hub.

Note that both traction and concentricity may be affected with using an adaptor. For best results shafts with h6 tolerance or better are recommended. Undersized shafts become progressively less effective. For similar reasons, flatted shafts with more than 1/4 of their diameter removed are not recommended.

For insulating bore adaptors, suffix part number with G.
eg. HPC257.4G

Couplings

Bore Reducers

DISCOUNTS

1 - 9	10 +
List Price	-8%

PART NUMBER	PRICE EACH 1-9	PART NUMBER	PRICE EACH 1-9	PART NUMBER	PRICE EACH 1-9
HPC257-4	£4.77	HPC259-5	£4.77	HPC260-6	£4.77
HPC257.4-76	£4.77	HPC259-6	£4.77	HPC260-6.35	£4.77
HPC257-5	£4.77	HPC259-6.35	£4.77	HPC260-7	£4.77
HPC257-6	£4.77	HPC259-7	£4.77	HPC260-7.94	£4.77
HPC257-6.35	£4.77	HPC259-7.94	£4.77	HPC260-8	£4.77
HPC257-7	£4.77	HPC259-8	£4.77	HPC260-9	£4.77
HPC257-7.94	£4.77	HPC259-9	£4.77	HPC260-9.52	£4.77
HPC257-8	£4.77	HPC259-9.52	£4.77	HPC260-10	£4.77
		HPC259-10	£4.77	HPC260-11	£4.77
				HPC260-12	£4.77
				HPC260-12.7	£4.77
				HPC260-14	£4.77

Note that both traction and concentricity may be affected with using an adaptor. For best results shafts with h6 tolerance or better are recommended. Undersized shafts become progressively less effective. For similar reasons, flatted shafts with more than 1/4 of their diameter removed are not recommended.

For insulating bore adaptors, suffix part number with G.
eg. HPC257.4G

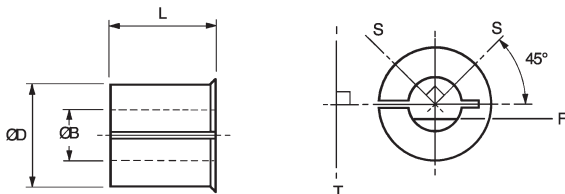
Couplings

Bore Reducers

Couplings Bore Reducers

DISCOUNTS	1 - 9	10 +
	List Price	-8%

PART NUMBER	PRICE EACH 1-9
HPC261-7.94	£11.20
HPC261-8	£11.20
HPC261-9	£11.20
HPC261-9.52	£11.20
HPC261-10	£11.20
HPC261-11	£11.20
HPC261-12	£11.20
HPC261-12.7	£11.20
HPC261-14	£11.20
HPC261-15	£11.20
HPC261-15.88	£11.20
HPC261-16	£11.20
HPC261-18	£11.20



Bore For optimum fastening, install bore reducers as shown.

'S' represents screws in set screw hub.

'T' represents tangential screw in clamp hub.

'F' shows recommended orientation of flattened shaft in set screw hub.



Couplings

Bore Reducers

Couplings Bore Reducers

Type	HPC257	HPC259	HPC260	HPC261
øD	10	12.7	16	20
L	8.1	10.7	13.2	20
To fit bores coded	32	36	42	48
minor øB	Adaptor ref.			
2				
3				
3.05				
3.17				
4	HPC257-4			
4.76	HPC257-4.76			
5	HPC257-5	HPC259-5		
6	HPC257-6	HPC259-6	HPC260-6	
6.35	HPC257-6.35	HPC259-6.35	HPC260-6.35	
7	HPC257-7	HPC259-7	HPC260-7	
7.94	HPC257-7.94	HPC259-7.94	HPC260-7.94	HPC261-7.94
8	HPC257-8	HPC259-8	HPC260-8	HPC261-8
9		HPC259-9	HPC260-9	HPC261-9
9.52		HPC259-9.52	HPC260-9.52	HPC261-9.52
10		HPC259-10	HPC260-10	HPC261-10
11			HPC260-11	HPC261-11
12			HPC260-12	HPC261-12
12.70			HPC260-12.7	HPC261-12.7
14			HPC260-14	HPC261-14
15				HPC261-15
15.87				HPC261-15.87
16				HPC261-16
18				HPC261-18
19				
19.05				
20				
22				
22.22				
24				
25				
25.40				
material	aluminium alloy			