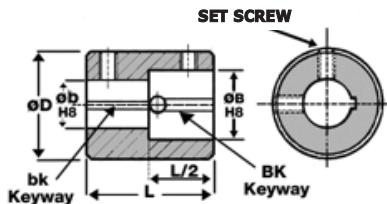


Couplings

Material

Shaft Couplings

Mild Steel 045M10 (EN32)



Couplings Shaft Clamps

DISCOUNTS	1 - 5	6-19	20-39	40-59	60-99	100-499	500-999	1000+
	List Price	-10%	-20%	-30%	-35%	-40%	-50%	-60%

PART NUMBER	ØD	L	øB H8	øB MA	K BK	øb H8	K bk	S	MO	W	PRICE EACH 1-5
HPCAF10	20	30	10	10.0	3	10	3	M4	3.39×10^{-6}	53	£22.87
HPCAF12-10/12	28	36	12	12.0	4	10	3	M5	1.62×10^{-5}	135	£24.34
HPCAF12	28	36	12	12.0	4	12	4	M5	1.62×10^{-5}	138	£24.34
HPCAF15-10/15	28	36	15	15.0	5	10	3	M5	1.53×10^{-5}	129	£24.34
HPCAF15-12/15	28	36	15	15.0	5	12	4	M5	1.53×10^{-5}	123	£24.34
HPCAF15	28	36	15	15.0	5	15	5	M5	1.53×10^{-5}	117	£24.34
HPCAF20-15/20	32	40	20	20.0	6	15	5	M6	2.65×10^{-5}	167	£30.75
HPCAF20	32	40	20	20.0	6	20	6	M6	2.65×10^{-5}	145	£30.75
HPCAF24	40	54	24	24.0	8	24	8	M6	8.99×10^{-5}	349	£35.76
HPCAF25-20/25	40	54	25	25.0	8	20	6	M8	8.71×10^{-5}	343	£35.76
HPCAF25	40	54	25	25.0	8	25	8	M8	8.71×10^{-5}	300	£35.76
HPCAF30-25/30	50	54	30	30.0	8	25	8	M8	2.21×10^{-4}	552	£39.35
HPCAF30	50	54	30	30.0	8	30	8	M8	2.21×10^{-4}	505	£39.35

MA: Maximum Available

K : Keyway

S : Set screw

MO: Moment of Inertia (kg.m²)

W : Weight (g)

3.108



Unit 14, Foxwood Industrial Park, Foxwood Rd. Chesterfield, Derbyshire S41 9RN

Telephone +44(0)1246 268080 Fax +44(0)1246 260003

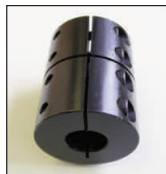
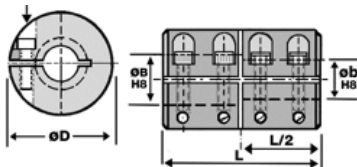
Material

Mild Steel 045M10 (EN32)

Couplings

Shaft Clamps

SET SCREW



Couplings Shaft Clamps

DISCOUNTS	1 - 5	6-19	20-39	40-59	60-99	100-499	500-999	1000+
	List Price	-10%	-20%	-30%	-35%	-40%	-50%	-60%

PART NUMBER	ØD	L	øB H8	øB MA	øb H8	S	MO	W	PRICE EACH 1-5
HPCSC5	22	30	5	10.0	5	M3	4.92 x 10 ⁻⁶	75	£21.69
HPCSC5-5/6	22	30	6	10.0	5	M3	4.92 x 10 ⁻⁶	75	£27.88
HPCSC6	22	30	6	10.0	6	M3	4.99 x 10 ⁻⁶	71	£27.88
HPCSC8-6/8	22	30	8	10.0	6	M3	5.08 x 10 ⁻⁶	70	£27.88
HPCSC8	22	30	8	10.0	8	M3	5.08 x 10 ⁻⁶	70	£27.88
HPCSC10-8/8	30	40	8	13.0	8	M4	2.27 x 10 ⁻⁵	182	£35.78
HPCSC10	30	40	10	13.0	10	M4	2.27 x 10 ⁻⁵	177	£35.78
HPCSC12-10/10	36	50	10	19.5	10	M5	6.06 x 10 ⁻⁵		£37.43
HPCSC12-10/12	36	50	12	19.5	10	M5	6.06 x 10 ⁻⁵	343	£37.43
HPCSC12	36	50	12	19.5	12	M5	6.06 x 10 ⁻⁵	330	£37.43
HPCSC15-12/12	40	50	12	23.0	12	M5	9.13 x 10 ⁻⁵		£44.63
HPCSC15-12/15	40	50	15	23.0	12	M5	9.13 x 10 ⁻⁵	360	£44.63
HPCSC15	40	50	15	23.0	15	M5	9.13 x 10 ⁻⁵	376	£44.63
HPCSC20-15/15	50	65	15	25.0	15	M6	2.81 x 10 ⁻⁴		£49.39
HPCSC20-15/20	50	65	20	25.0	15	M6	2.81 x 10 ⁻⁴	850	£49.39
HPCSC20	50	65	20	25.0	20	M6	2.81 x 10 ⁻⁴	830	£49.39
HPCSC25-20/20	60	65	20	33.0	20	M8	5.79 x 10 ⁻⁴		£91.36
HPCSC25-20/25	60	65	25	33.0	20	M8	5.79 x 10 ⁻⁴	1100	£91.36
HPCSC25	60	65	25	33.0	25	M8	5.79 x 10 ⁻⁴	1100	£91.36
HPCSC30-25/25	70	80	25	43.0	25	M8	1.33 x 10 ⁻³		£102.46
HPCSC30-25/30	70	80	30	43.0	25	M8	1.33 x 10 ⁻³	1800	£102.46
HPCSC30	70	80	30	43.0	30	M8	1.33 x 10 ⁻³	1800	£102.46

MA : Maximum Available
MO : Moment of Inertia (kg.m²)

S : Set screw
W : Weight (g)

Unit 14, Foxwood Industrial Park, Foxwood Rd. Chesterfield, Derbyshire S41 9RN

Telephone +44(0)1246 268080 Fax +44(0)1246 260003



3.109