

## Material

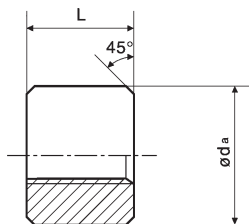
Cast Iron - Round  
DIN 103 Quality 8 H

# Linear Motion

## Threaded Nuts Precision Range (Cast Iron)

### DISCOUNTS

1 - 5	List Price
6-19	-20%
20-39	-28%
40-59	-35%
60-99	-45%
1000+	-50%



For left hand threaded nuts use HPC516 instead of HPC511

PART NUMBER	Tr d x p	da	L	PRICE EACH 1-5	
				RIGHT HAND	LEFT HAND
				HPC511	HPC516
HPC511-012-500	12 x 3	26	24	£21.63	£27.03
HPC511-014-500	14 x 3	30	28	£16.05	£24.15
HPC511-016-500	16 x 4	36	32	£25.28	£27.80
HPC511-018-500	18 x 4	40	36	£25.17	£27.68
HPC511-020-500	20 x 4	45	40	£25.17	£27.68
HPC511-022-500	22 x 5	45	44	£25.42	£27.95
HPC511-024-500	24 x 5	50	48	£27.45	£30.21
HPC511-026-500	26 x 5	55	52	£27.89	£30.68
HPC511-028-500	28 x 5	60	56	£29.46	£32.42
HPC511-030-500	30 x 6	60	60	£33.08	£36.38
HPC511-032-500	32 x 6	60	64	£61.82	£36.85
HPC511-036-500	36 x 6	75	72	£39.49	£43.44
HPC511-040-500	40 x 7	80	80	£80.46	£88.53
HPC511-044-500	44 x 7	80	88	£96.94	£107.03
HPC511-048-500	48 x 7	90	96	£118.92	£130.81
HPC511-050-500	50 x 8	90	100	£118.92	£130.81
HPC511-060-500	60 x 9	100	120	£231.97	£159.40
HPC511-070-500	70 x 9	110	140	£274.30	£176.26

Linear Motion Imperial Threaded Flanged Nuts

