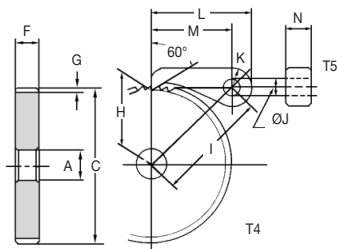


Ratchets & Pawls

Materials

Pitch 2.09 - 12.56

STD : Steel S45C
Induction hardened teeth



Pawls

PART NUMBER	J	K	L	M	N	Shape	Weight (kgf)	Price Each
SRT2/3-C	5	8.0	38.0	30	6	T4	0.02	£27.86
SRT1-C	8	10.0	49.0	39	12	T4	0.05	£42.25
SRT2-C	10	12.5	67.5	55	15	T4	0.12	£45.97
SRT3-C	12	15.0	80.0	65	20	T4	0.22	£52.23
SRT4-C	13	18.0	98.0	80	25	T4	0.30	£74.61

Ratchets

PART NUMBER	Pitch	No. of Teeth	Bore (A)	Outside Dia.(C)	Face Width(F)	Total Length
SRT2/3-50	2.09	50	10	33.3	6	6
SRT2/3-60		60	10	40		
SRT2/3-80		80	12	53.3		
SRT2/3-90		90	12	60		
SRT2/3-100		100	12	66.6		
SRT1-50	3.14	50	12	50	12	12
SRT1-60		60	15	60		
SRT1-80		80	15	80		
SRT1-90		90	15	90		
SRT1-100		100	15	100		
SRT2-30	6.28	30	15	60	15	15
SRT2-40		40	15	80		
SRT2-50		50	15	100		
SRT2-60		60	15	120		
SRT3-30		9.42	30	15		
SRT3-40	40		20	120		
SRT3-50	50		20	150		
SRT4-30	30		20	120		
SRT4-40	12.56		40	20	160	25
SRT4-50		50	20	200		

10.2



Unit 14, Foxwood Industrial Park, Foxwood Rd. Chesterfield, Derbyshire S41 9RN

Telephone +44(0)1246 268080 Fax +44(0)1246 260003

Materials

STD : Steel S45C
Induction hardened teeth

Ratchets & Pawls

Pitch 2.09 - 12.56



SPECIFICATIONS

CATALOGUE NO.	SRT - C / SRT
Angle of jaw or teeth	60°
Material	S45C
Heat treatment	Induction harden teeth
Surface hardness	HRC48 ~ 53
Surface treatment	Black oxide
Surface finish	Cut
Datum reference surface for teeth cutting	Bore

DISCOUNTS

1 - 9	List Price
10 - 29	- 5%
30 - 49	- 10%
50 - 99	- 15%
100 - 200	- 20%

PART NUMBER	Depth of Teeth(G)	Mounting Distance	Centre Distance	Shape	Allowable Load (kgf) Bending strength	Allowable Load (N) Bending strength	Weight (kgf)	Price Each 1-9
SRT2/3-50	1.0	15.5	33.5	T4	20	196.1	0.034	£29.08
SRT2/3-60		19.0	35.2		22	215.8	0.053	£33.82
SRT2/3-80		25.5	39.1		24	235.4	0.095	£43.49
SRT2/3-90		29.0	41.4		25	245.2	0.120	£47.75
SRT2/3-100		32.0	43.5		26	255.0	0.150	£55.46
SRT1-50	1.6	23.4	45.4	T4	64	627.6	0.160	£34.27
SRT1-60		28.4	48.1		70	686.5	0.240	£40.76
SRT1-80		38.4	54.6		78	764.9	0.440	£53.96
SRT1-90		43.4	58.2		81	794.3	0.560	£59.95
SRT1-100		48.4	62.0		83	814.0	0.700	£73.37
SRT2-30	3.1	26.9	61.1	T4	110	1079.0	0.280	£41.79
SRT2-40		36.9	66.0		136	1334.0	0.530	£55.46
SRT2-50		46.9	72.0		154	1510.0	0.860	£70.36
SRT2-60		56.9	78.9		169	1657.0	1.240	£82.34
SRT3-30	5.0	40.0	76.2	T4	236	2314.0	0.860	£74.61
SRT3-40		55.0	85.0		292	2864.0	1.580	£109.19
SRT3-50		70.0	95.4		333	3266.0	2.540	£158.49
SRT4-30	7.4	52.6	95.7	T4	438	4295.0	1.910	£149.27
SRT4-40		72.6	108.0		541	5305.0	3.540	£217.72
SRT4-50		92.6	122.4		616	6041.0	5.680	£311.07

Pawls & Ratchets steel PITCH 2.09/12.56

