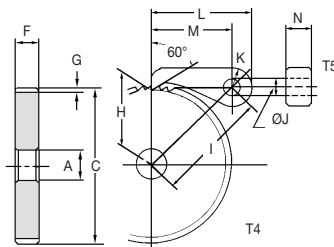


Ratchets & Pawls

Materials**Pitch 2.09 - 12.56**STD : Steel S45C
Induction hardened teeth
Pawls & Ratchets steel PITCH 2.09-12.56

Pawls

PART NUMBER	J	K	L	M	N	Shape	Weight (kgf)	Price Each
SRT2/3-C	5	8.0	38.0	30	6	T4	0.02	£22.50
SRT1-C	8	10.0	49.0	39	12	T4	0.05	£34.12
SRT2-C	10	12.5	67.5	55	15	T4	0.12	£37.14
SRT3-C	12	15.0	80.0	65	20	T4	0.22	£42.19
SRT4-C	13	18.0	98.0	80	25	T4	0.30	£60.25

Ratchets

PART NUMBER	Pitch	No. of Teeth	Bore (A)	Outside Dia.(C)	Face Width(F)	Total Length	
SRT2/3-50	2.09	50	10	33.3	6	6	
SRT2/3-60		60	10	40			
SRT2/3-80		80	12	53.3			
SRT2/3-90		90	12	60			
SRT2/3-100		100	12	66.6			
SRT1-50	3.14	50	12	50	12	12	
SRT1-60		60	15	60			
SRT1-80		80	15	80			
SRT1-90		90	15	90			
SRT1-100		100	15	100			
SRT2-30	6.28	30	15	60	15	15	
SRT2-40		40	15	80			
SRT2-50		50	15	100			
SRT2-60		60	15	120			
SRT3-30		30	15	90			20
SRT3-40	40	20	120				
SRT3-50	50	20	150				
SRT4-30	30	20	120	25	25		
SRT4-40	40	20	160				
SRT4-50	50	20	200				

10

Unit 14, Foxwood Industrial Park, Foxwood Road, Chesterfield, Derbyshire S41 9RN

Telephone +44(0)1246 268080

Fax +44(0)1246 260003

Materials

STD : Steel S45C
Induction hardened teeth

Ratchets & Pawls**Pitch 2.09 - 12.56**
Pawls & Ratchets Steel PITCH 2.09/12.56
SPECIFICATIONS

CATALOGUE NO.	SRT - C / SRT
Angle of jaw or teeth	60°
Material	S45C
Heat treatment	Induction harden teeth
Surface hardness	HRC48 - 53
Surface treatment	Black oxide
Surface finish	Cut
Datum reference surface for teeth cutting	Bore

DISCOUNTS

1 - 9	List Price
10 - 29	- 5%
30 - 49	- 10%
50 - 99	- 15%
100 - 200	- 20%

PART NUMBER	Depth of Teeth(G)	Mounting Distance	Centre Distance	Shape	Allowable Load (kgf) Bending strength	Allowable Load (N) Bending strength	Weight (kgf)	Price Each 1-9
SRT2/3-50	15.5	33.5			20	196.1	0.034	£23.49
SRT2/3-60	19.0	35.2			22	215.8	0.053	£27.32
SRT2/3-80	25.5	39.1		T4	24	235.4	0.095	£35.12
SRT2/3-90	29.0	41.4			25	245.2	0.120	£38.57
SRT2/3-100	32.0	43.5			26	255.0	0.150	£44.78
SRT1-50	23.4	45.4			64	627.6	0.160	£27.68
SRT1-60	28.4	48.1			70	686.5	0.240	£32.93
SRT1-80	38.4	54.6		T4	78	764.9	0.440	£43.59
SRT1-90	43.4	58.2			81	794.3	0.560	£48.41
SRT1-100	48.4	62.0			83	814.0	0.700	£59.24
SRT2-30	26.9	61.1			110	1079.0	0.280	£33.75
SRT2-40	36.9	66.0		T4	136	1334.0	0.530	£44.78
SRT2-50	46.9	72.0			154	1510.0	0.860	£56.82
SRT2-60	56.9	78.9			169	1657.0	1.240	£66.49
SRT3-30	40.0	76.2			236	2314.0	0.860	£60.25
SRT3-40	55.0	85.0		T4	292	2864.0	1.580	£88.17
SRT3-50	70.0	95.4			333	3266.0	2.540	£127.96
SRT4-30	52.6	95.7			438	4295.0	1.910	£120.52
SRT4-40	72.6	108.0		T4	541	5305.0	3.540	£175.78
SRT4-50	92.6	122.4			616	6041.0	5.680	£251.13

Unit 14, Foxwood Industrial Park, Foxwood Road, Chesterfield, Derbyshire S41 9RN

Telephone +44(0)1246 268080 Fax +44(0)1246 260003

**11**