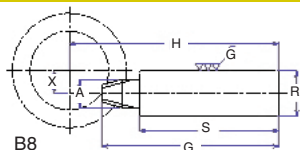


Hypoid Bevel Gears

1 - 1.5 MOD

Materials

STD : SCM415



Datum ref. surface for teeth cutting

Bore H7 (Pinion: Shaft h7 ground as reference)

Caution: gears are machinable except tooth area due to masking during carburization.

Precision grade

JIS B 1704 grade 3

Gear teeth

Gleason

Pressure Angle

20°

Material

SCM415

Heat Treatment

Gear tooth carburized (*1)

Core

Hardness

HB300-400

Surface

Hardness

HRC60-63

Surface

Treatment

-

Surface

Finish

Cut

Hypoid Bevel Gears MOD 1-1.5

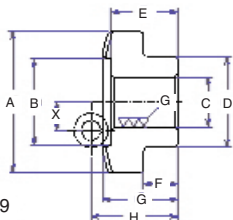
PART NUMBER	MOD	Actual MOD	No of Teeth	C	R	D	A	H	G	F	E
MHP1-0453R	1	1.067	45	12		30	48	19	16.3	7	14
MHP1-3045L	1	1.067	3		22.1		10.3	127	113		
MHP1.5-0453R	1.5	1.733	45	14		40	78	28	23.7	10	20
MHP1.5-3045L	1.5	1.733	3		31.1		17.6	170	148		
MHP1-0603R	1	1.05	60	12		34	63	21	18.1	8	16
MHP1-3060L	1	1.05	3		26.1		11.7	142	125		
MHP1.5-0603R	1.5	1.633	60	20		50	98	33	28.7	13	25
MHP1.5-3060L	1.5	1.633	3		36.1		15.7	199	168		
MHP1-0602R	1	1.05	60	12		34	63	21	17.8	8	16
MHP1-2060L	1	1.05	2		22.1		12.8	134	120		
MHP1.5-0602R	1.5	1.633	60	20		50	98	33	28.2	13	25
MHP1.5-2060L	1.5	1.633	2		31.1		17.7	175	149		
MHP1-0451R	1	1.067	45	12		30	48	19	16.5	7	14
MHP1-1045L	1	1.067	1		20.1		10.1	115	104		
MHP1.5-0451R	1.5	1.733	45	14		40	78	28	23.9	10	20
MHP1.5-1045L	1.5	1.733	1		26.1		18.3	152	138		
MHP1-0601R	1	1.05	60	12		34	63	21	17.9	8	16
MHP1-1060L	1	1.05	1		22.1		12.9	134	122		
MHP1.5-0601R	1.5	1.633	60	20		50	98	33	28.2	13	25
MHP1.5-1060L	1.5	1.633	1		31.1		17.7	175	151		
MHP1-0901R	1	1.089	90	20		50	98	33	28.8	13	25
MHP1-1090L	1	1.089	1		31.1		15.7	170	149		
MHP1-1201R	1	0.817	120	20		50	98	33	29.3	13	25
MHP1-1120L	1	0.817	1		31.1		13.4	170	149		
MHP1-1801R	1	1	180	25		70	180	47	40.1	18	35
MHP1-1180L	1	1	1		42.1		22.4	242	200		
MHP1-2001R	1	1	200	25		70	200	47	40.6	18	35
MHP1-1200L	1	1	1		42.1		21.5	252	205		

Materials

STD : SCM415

Hypoid Bevel Gears

1 - 1.5 MOD



B9



DISCOUNTS

Quantity	List Price
1 - 5	-
6 - 19	- 5%
20 - 39	- 10%
40 - 59	- 15%
60 - 99	- 20%
100 - 200	- 25%

J	B	S	X Shape	Allowable Torque		Backlash		Weight		Price Each (15)
				(kgf.m)	(N.m)	Low	Up	Kg	Ratio	
6	35.1		10 B9	1.05	10.3	0.05	0.15	0.15	15:1	£74.38
6		94	10 B8	1.05	10.3	0.05	0.15	0.29	15:1	£72.50
10	56.5		18 B9	4.2	41.19	0.1	0.2	0.5	15:1	£137.61
10		116	18 B8	4.2	41.19	0.1	0.2	0.73	15:1	£134.81
8	46.4		15 B9	2.38	23.34	0.05	0.15	0.29	20:1	£113.44
8		102	15 B8	2.38	23.34	0.05	0.15	0.45	20:1	£111.57
10	76.8		22 B9	8.4	82.38	0.1	0.2	0.94	20:1	£195.27
10		135	22 B8	8.4	82.38	0.1	0.2	1.15	20:1	£175.72
8	46.4		18 B9	2.46	24.12	0.05	0.15	0.29	30:1	£109.71
8		94	18 B8	2.46	24.12	0.05	0.15	0.28	30:1	£106.91
10	76.7		28 B9	8.9	87.28	0.1	0.2	0.94	30:1	£190.63
10		116	28 B8	8.9	87.28	0.1	0.2	0.77	30:1	£166.43
6	34.9		14 B9	1.15	11.28	0.05	0.15	0.16	45:1	£66.01
6		85	14 B8	1.15	11.28	0.05	0.15	0.22	45:1	£66.94
10	56		25 B9	4.75	46.58	0.1	0.2	0.5	45:1	£101.33
10		102	25 B8	4.75	46.58	0.1	0.2	0.48	45:1	£93.89
8	46.3		20 B9	2.58	25.3	0.05	0.15	0.29	60:1	£85.52
8		94	20 B8	2.58	25.3	0.05	0.15	0.28	60:1	£82.74
10	76.8		30 B9	9.58	93.95	0.1	0.2	0.94	60:1	£128.31
10		116	30 B8	9.58	93.95	0.1	0.2	0.77	60:1	£111.57
10	76.2		32 B9	7.28	71.39	0.05	0.15	0.94	90:1	£189.70
10		116	32 B8	7.28	71.39	0.05	0.15	0.76	90:1	£175.72
10	76.4		32 B9	5.28	51.78	0.03	0.1	0.94	120:1	£185.02
10		116	32 B8	5.28	51.78	0.03	0.1	0.75	120:1	£165.50
15	148.2		60 B9	26.5	259.88	0.05	0.15	3.99	180:1	£673.25
15		154	60 B8	26.5	259.88	0.05	0.15	1.88	180:1	£318.96
18	162.4		65 B9	34	333.43	0.05	0.15	4.76	200:1	£843.42
18		154	65 B8	34	333.43	0.05	0.15	1.88	200:1	£338.49

Hypoid Bevel Gears MOD 1.15

