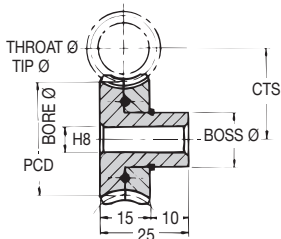


# Materials **Anti-backlash Wormwheels**

STD : Phosphor Bronze PB<sub>2</sub>

SPECIAL TEETH : between 40 - 95

## 1.5 MOD



**20° Pressure Angle**

### DISCOUNTS

1 - 5	List Price
6 - 19	- 12%
20 - 39	- 25%
40 - 59	- 33%
60 - 99	- 37%
100 - 200	- 42%

<b>TORQUE CHECK</b>	50 TEETH x 1000 R.P.M. INPUT
variations at back	with std worm
<b>TORQUE Nm</b>	1.74
<b>K.W.</b>	0.0034

PART NUMBER	TEETH	PCD (mm)	CTS (mm)	THROAT Ø (mm)	TIP Ø (mm)	BOSS Ø (mm)	BORE Ø (mm)	PRICE EACH 1-5
ABM1.5-40	40	60.00	40.00	63.00	64.50	30	15	£84.37
ABM1.5-42	42	63.00	41.50	66.00	67.50	30	15	£96.12
ABM1.5-44	44	66.00	43.00	69.00	70.50	30	15	£107.87
ABM1.5-45	45	67.50	43.75	70.50	72.00	30	15	£119.64
ABM1.5-48	48	72.00	46.00	75.00	76.50	30	15	£131.35
ABM1.5-50	50	75.00	47.50	78.00	79.50	30	15	£143.13
ABM1.5-52	52	78.00	49.00	81.00	82.50	30	15	£154.86
ABM1.5-54	54	81.00	50.50	84.00	85.50	30	15	£166.61
ABM1.5-55	55	82.50	51.25	85.50	87.00	30	15	£174.03
ABM1.5-58	58	87.00	53.50	90.00	91.50	30	15	£181.47
ABM1.5-60	60	90.00	55.00	93.00	94.50	30	15	£188.90
ABM1.5-62	62	93.00	56.50	96.00	97.50	30	15	£196.31
ABM1.5-64	64	96.00	58.00	99.00	100.50	30	15	£203.74
ABM1.5-65	65	97.50	58.75	100.50	102.00	30	15	£211.08
ABM1.5-68	68	102.00	61.00	105.00	106.50	30	15	£225.40
ABM1.5-70	70	105.00	62.50	108.00	109.50	30	15	£239.62
ABM1.5-72	72	108.00	64.00	111.00	112.50	30	15	£253.65
ABM1.5-74	74	111.00	65.50	114.00	115.50	30	15	£268.36
ABM1.5-75	75	112.50	66.25	115.50	117.00	30	15	£282.65
ABM1.5-78	78	117.00	68.50	120.00	121.50	30	15	£296.98
ABM1.5-80	80	120.00	70.00	123.00	124.50	30	15	£311.31
ABM1.5-82	82	123.00	71.50	126.00	127.50	30	15	£330.56
ABM1.5-85	85	127.50	73.75	130.50	132.00	30	15	£346.64
ABM1.5-88	88	132.00	76.00	135.00	136.50	30	15	£364.31
ABM1.5-90	90	135.00	77.50	138.00	139.50	30	15	£381.95
ABM1.5-92	92	138.00	79.00	141.00	142.50	30	15	£399.59
ABM1.5-95	95	142.50	81.25	145.50	147.00	30	15	£417.28

**Anti-backlash Wormwheels** MOD 1.5

Unit 14, Foxwood Industrial Park, Foxwood Road, Chesterfield, Derbyshire S41 9RN

Telephone +44(0)1246 268080

Fax +44(0)1246 260003



**325**